



Low PIM Connector Installation

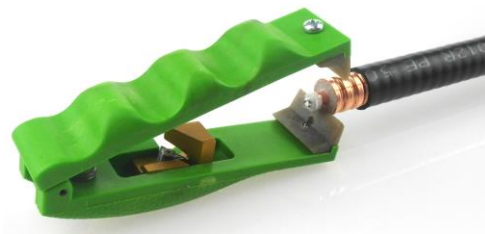
Low PIM Connector Installation on Site

To achieve the best PIM test results we recommend following the below procedures in addition to the recommendations outlined in the assembly instruction included together with each individual connector.

It is very important to keep the prepped cable and connectors absolutely clean of dirt, metal particles and scratches.



Prepare the cable according to assembly instructions (e.g. with tool SLT001-Cxx)



Use a plastic tool for removing the cut-off bond on the dielectric (e.g. SLT004-000)



On cables with tube inner conductor, remove burrs and sharp edges on the inside of the conductor (e.g. flaring tool integrated in tool SLT001-Cxx)



Before finally attaching the connector to the cable, clean the contact areas of the cables with alcohol by using non-metallic cleaning brushes/tools (e.g. SLZ0009-000)

